

BROWNBUILT 900

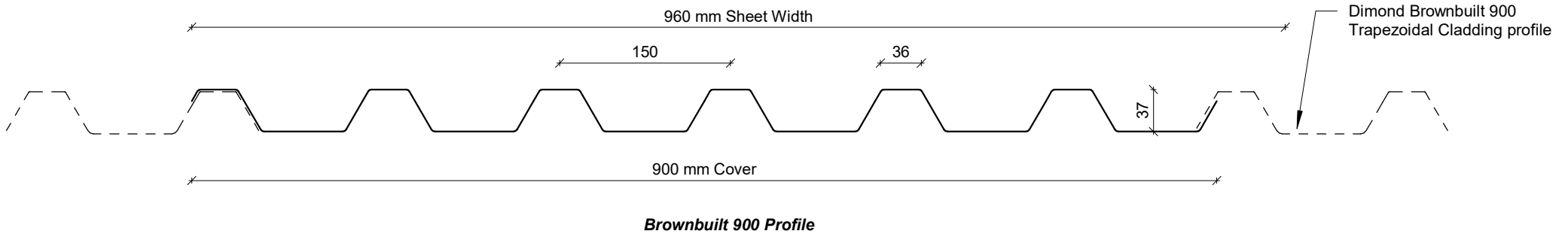
COMMERCIAL VERTICAL WALL CLADDING

DETAILS:

REV: DATE:

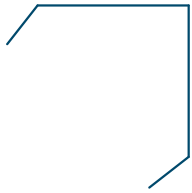
| | | | |
|---------|--------------------------------|---|----------|
| BBCVC00 | Cover Sheet | 1 | Sep 2025 |
| BBCVC01 | Profile Summary | 1 | Sep 2025 |
| BBCVC02 | Typical Flashing Detail | 1 | Sep 2025 |
| BBCVC03 | Barge Detail | 1 | Sep 2025 |
| BBCVC04 | Wall to Roof Transverse Detail | 1 | Sep 2025 |
| BBCVC05 | Wall to Roof Detail | 1 | Sep 2025 |
| BBCVC06 | Box Gutter Detail | 1 | Sep 2025 |
| BBCVC07 | Wall to Roof Apex Detail | 1 | Sep 2025 |
| BBCVC08 | External Corner Detail | 1 | Sep 2025 |
| BBCVC09 | Internal Corner Detail | 1 | Sep 2025 |
| BBCVC10 | Base Detail | 1 | Sep 2025 |
| BBCVC11 | Window / Door Head Detail | 1 | Sep 2025 |
| BBCVC12 | Window / Door Jamb Detail | 1 | Sep 2025 |
| BBCVC13 | Window Sill Detail | 1 | Sep 2025 |

| PROFILE OVERVIEW | |
|-----------------------|--------------------------|
| RIB TYPE | High |
| RIBS PER SHEET | 7 Ribs per sheet |
| WIDTH | 900mm Cover, 960mm Sheet |

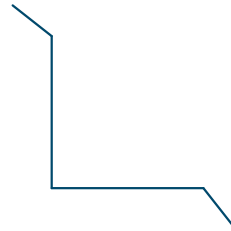


Profile Summary

Rev: 1 **Brownbuilt 900 Commercial Vertical Cladding**



External Corner /
Barge Flashing



Internal Corner Flashing



Base Flashing



Eaves Flashing



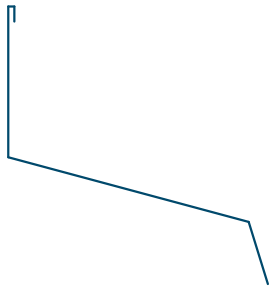
Window Sill Flashing



Window Head Flashing



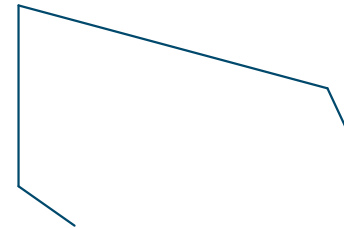
Window Jamb Flashing



Wall to Roof Flashing 1



Wall to Roof Flashing 2



Wall Roof to Wall Apex Flashing

Typical Flashing Detail

Rev: 1 **Brownbuilt 900 Commercial Vertical Cladding**

Barge flashing to match roofing.
Materials & Fixings as per Dimond
Technical Data & MRM Code of Practice

Profiled foam closure
where required

100 min

Prefinished screw with
neoprene washer

Dimond DHS girt

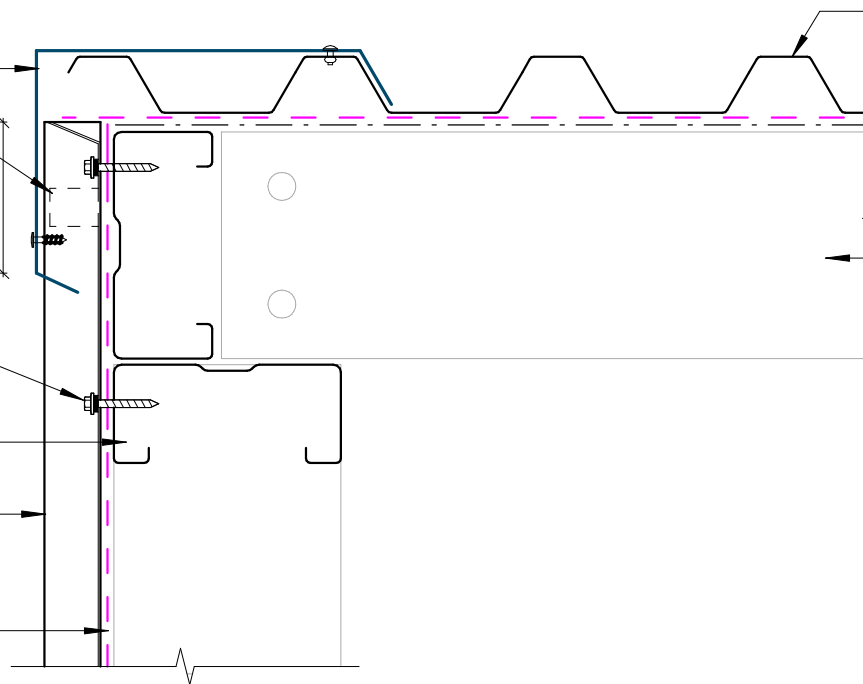
Dimond Brownbuilt 900
Trapezoidal cladding

Wall Underlay
(shown dashed)

Dimond roofing profile

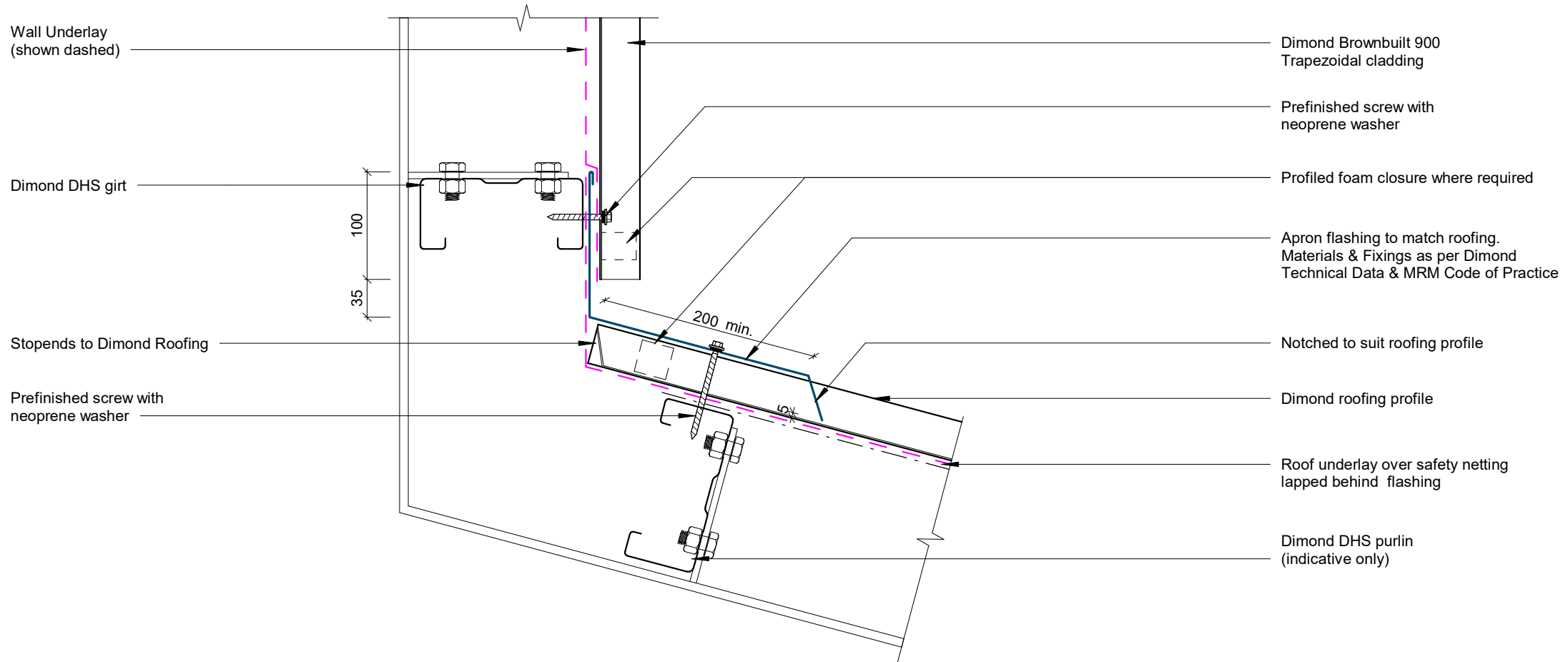
Roof underlay
over safety netting

Dimond DHS purlin
(indicative only)



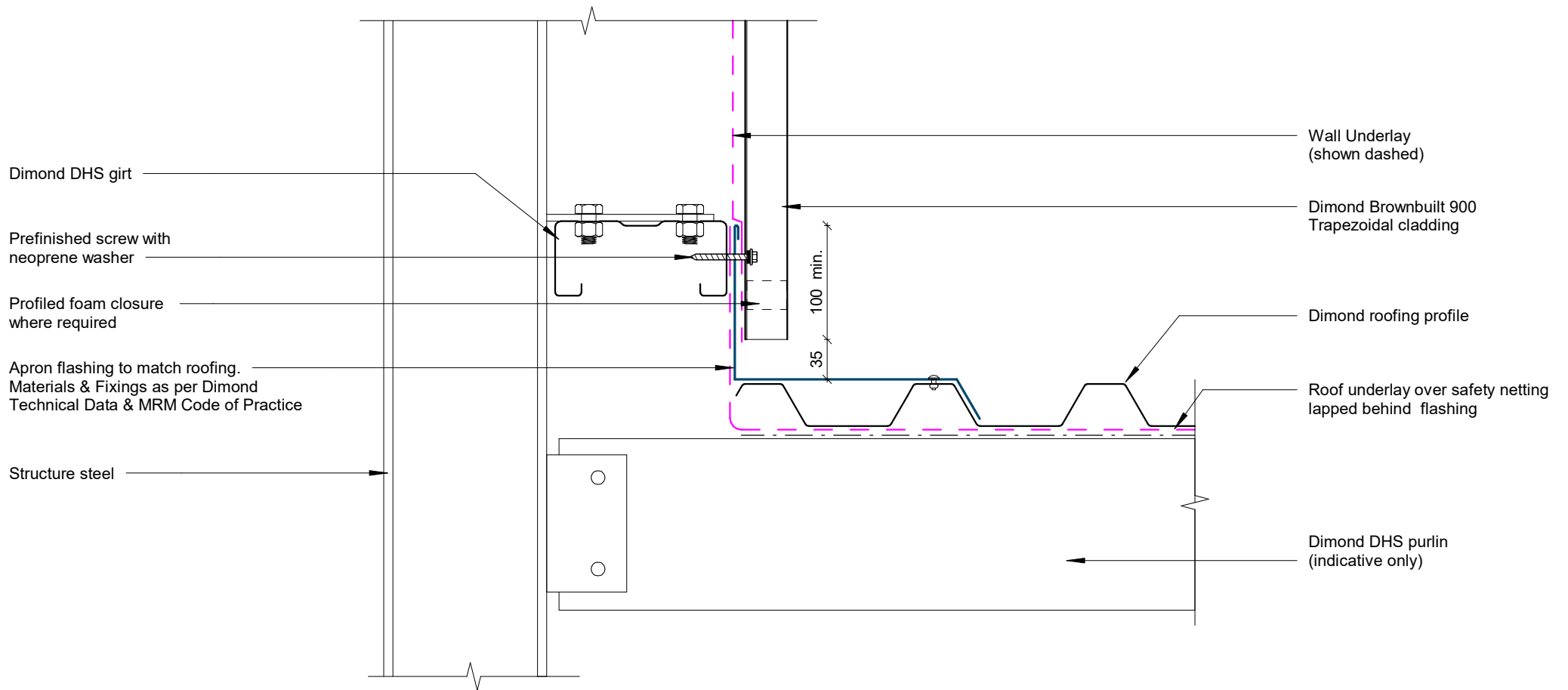
Barge Detail

Rev: 1 **Brownbuilt 900 Commercial Vertical Cladding**



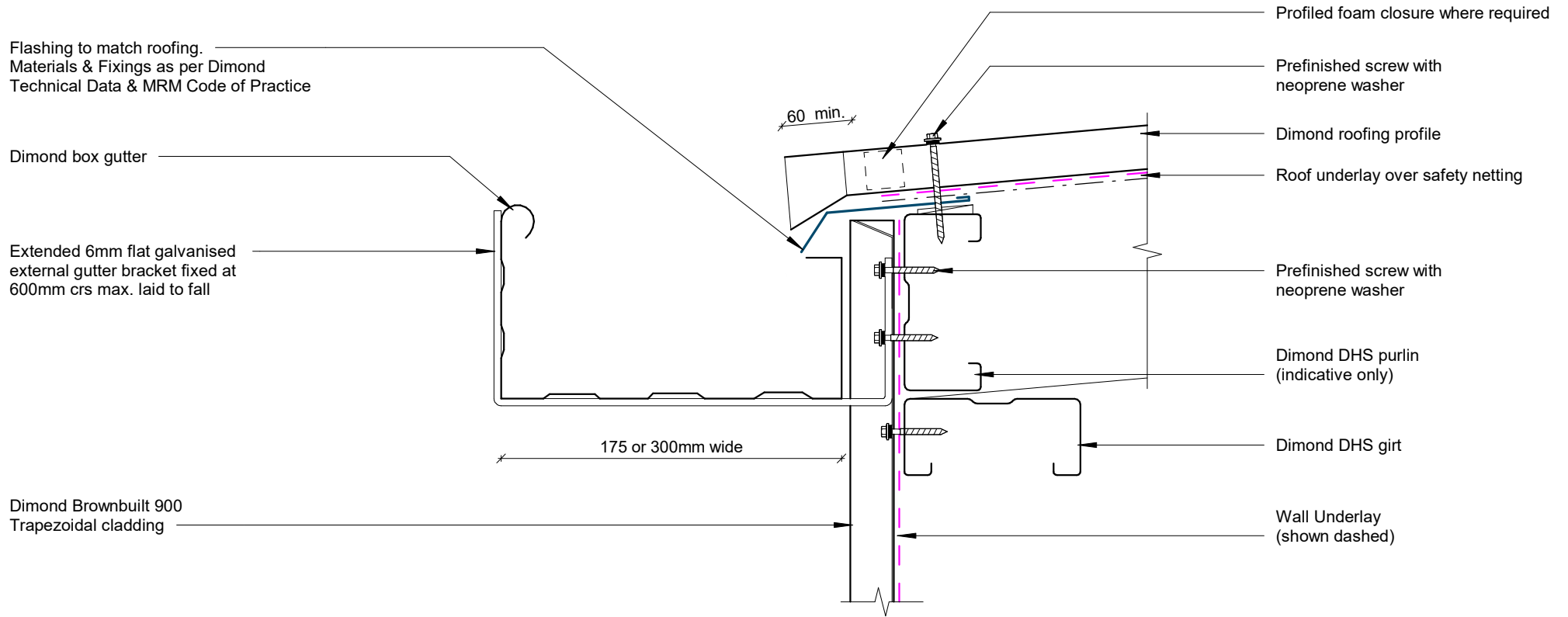
Wall to Roof Transverse Detail

Rev: 1 **Brownbuilt 900 Commercial Vertical Cladding**



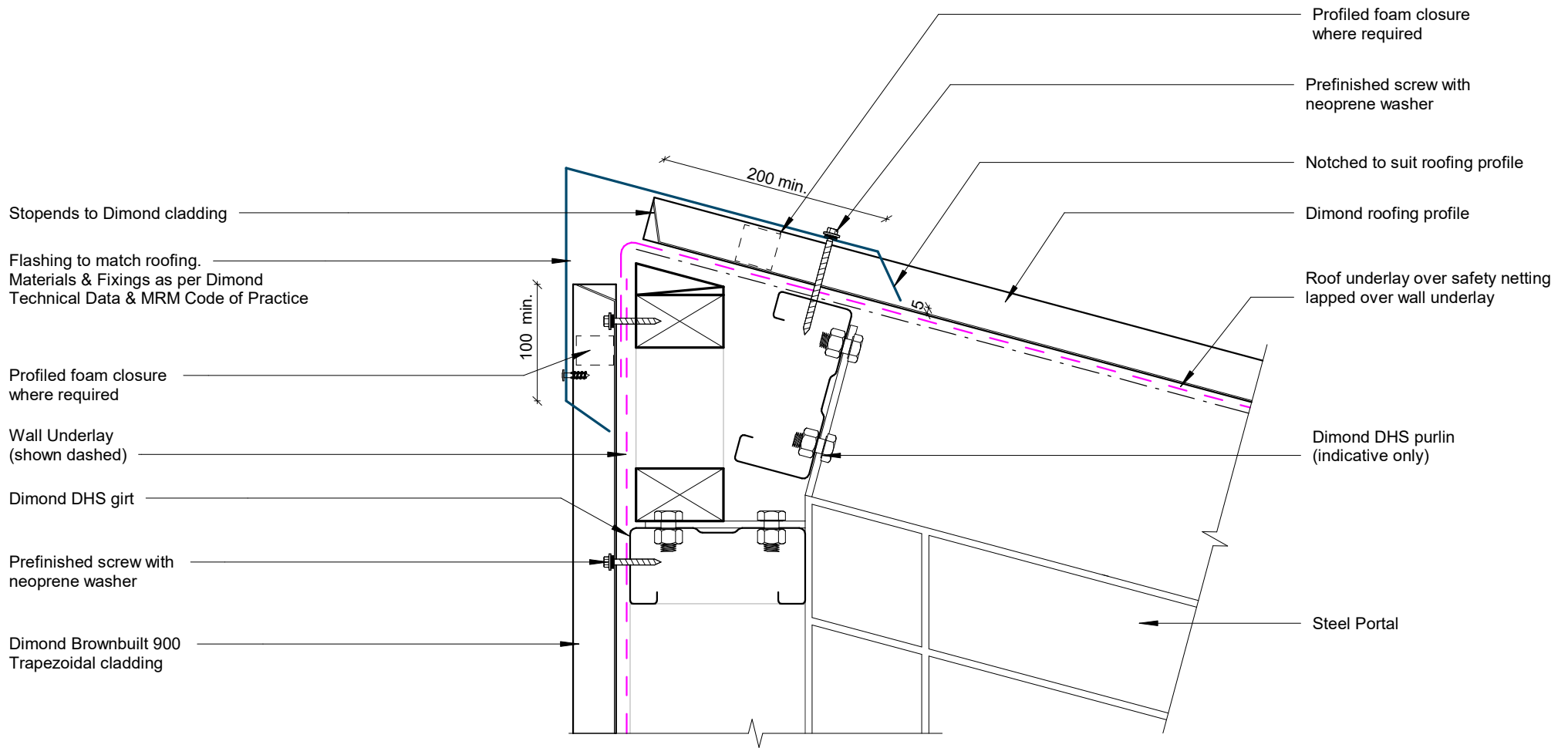
Wall to Roof Detail

Rev: 1 **Brownbuilt 900 Commercial Vertical Cladding**



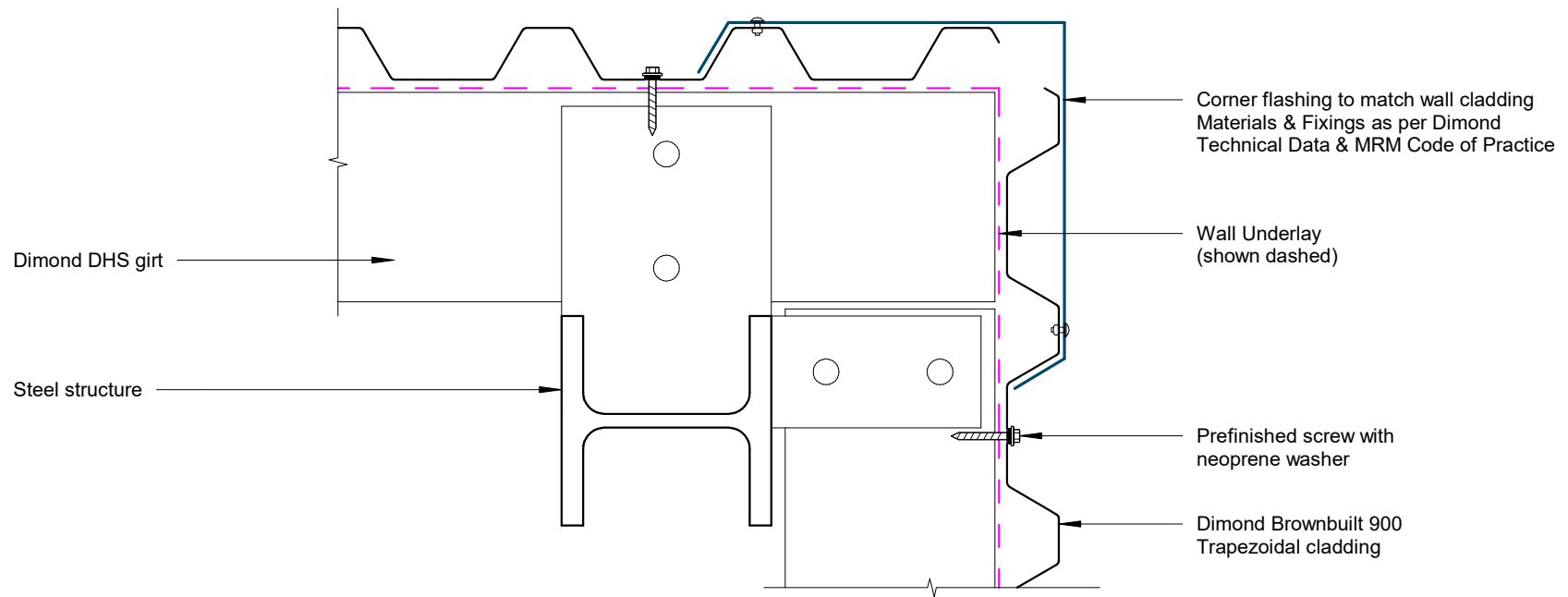
Box Gutter Detail

Rev: 1 **Brownbuilt 900 Commercial Vertical Cladding**



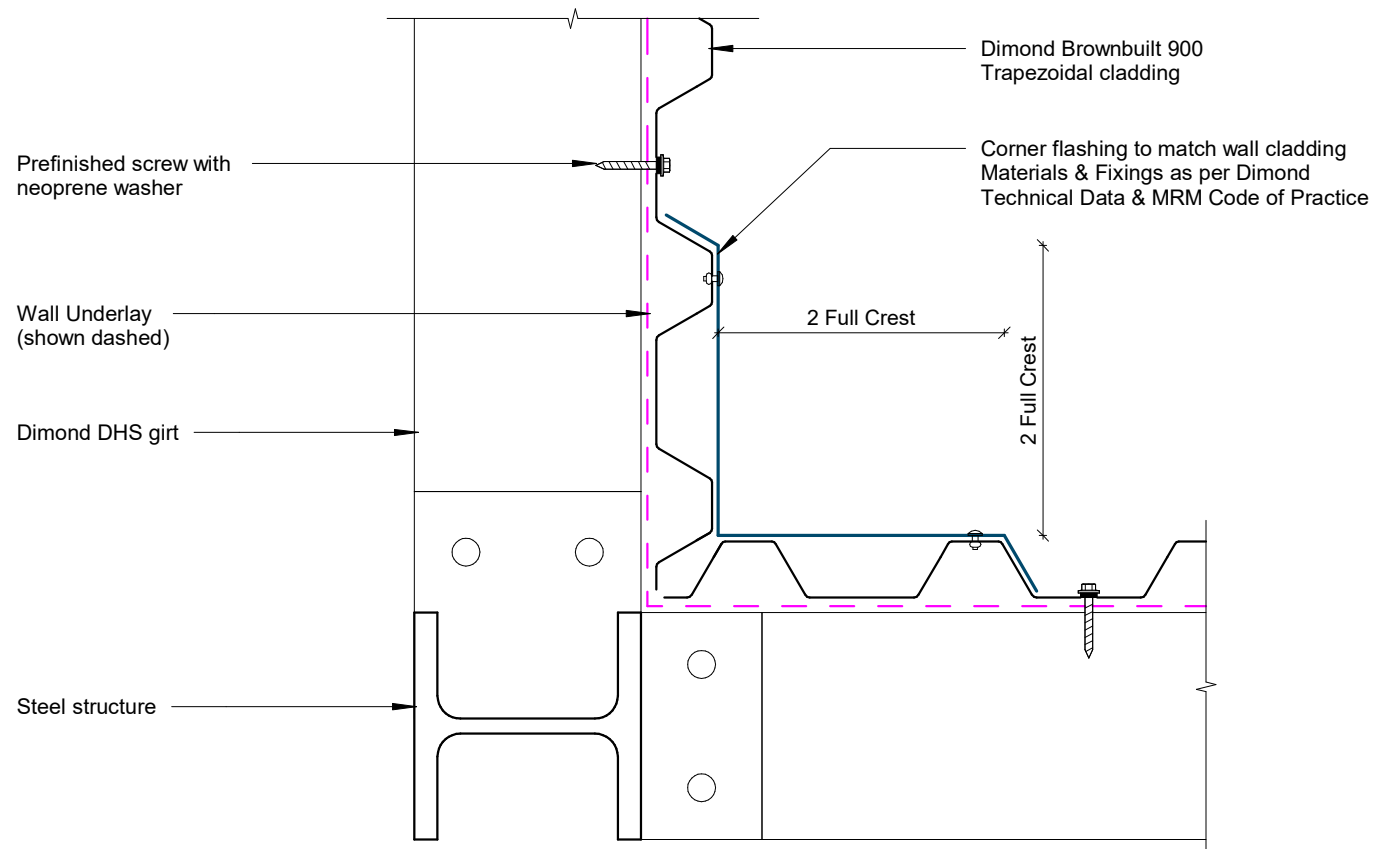
Wall to Roof Apex Detail

Rev: 1 **Brownbuilt 900 Commercial Vertical Cladding**



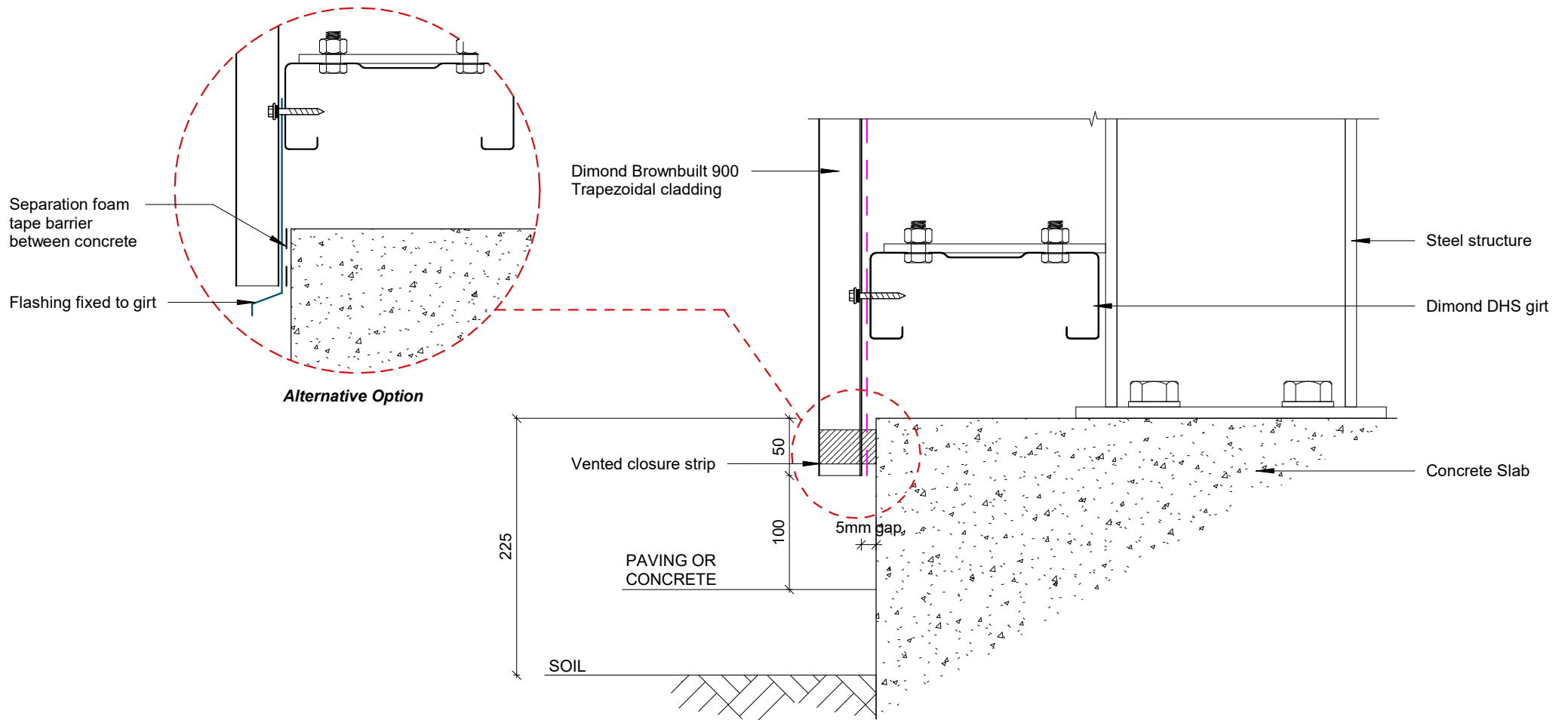
External Corner Detail

Rev: 1 **Brownbuilt 900 Commercial Vertical Cladding**



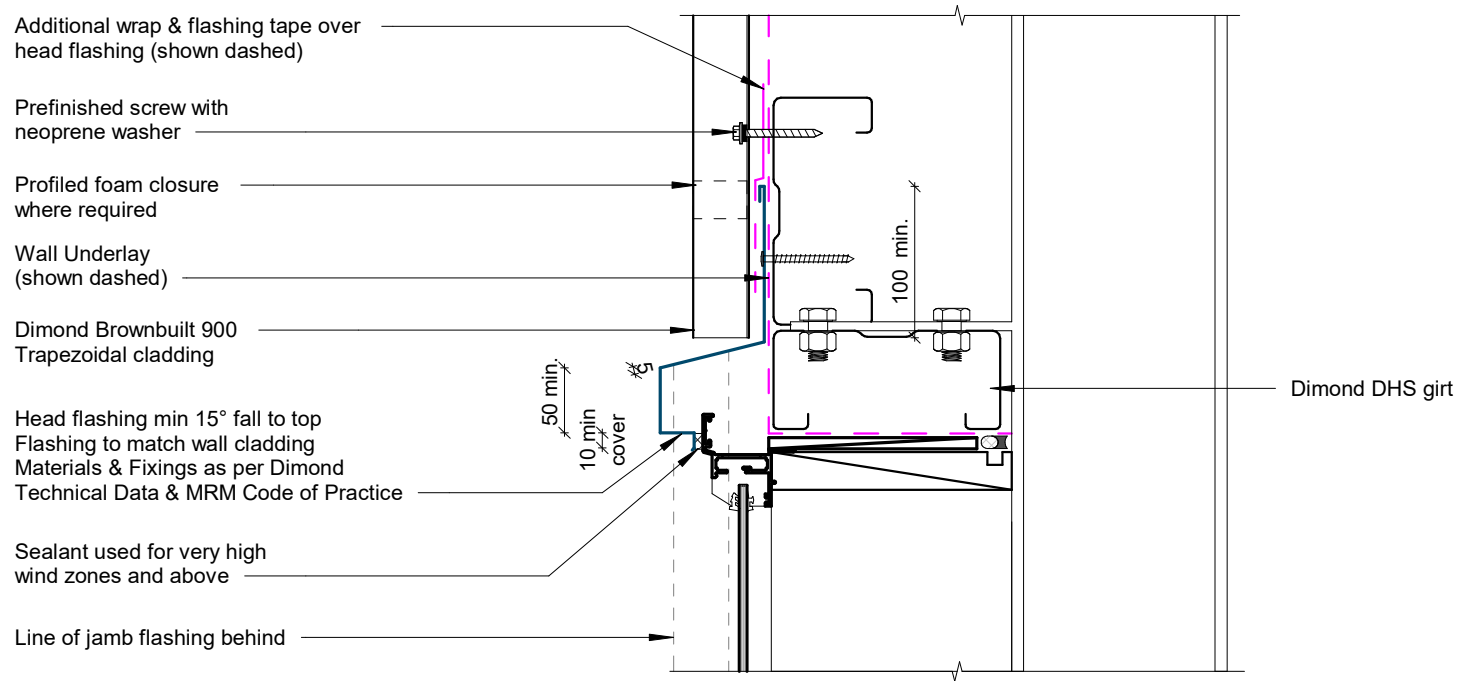
Internal Corner Detail

Rev: 1 **Brownbuilt 900 Commercial Vertical Cladding**



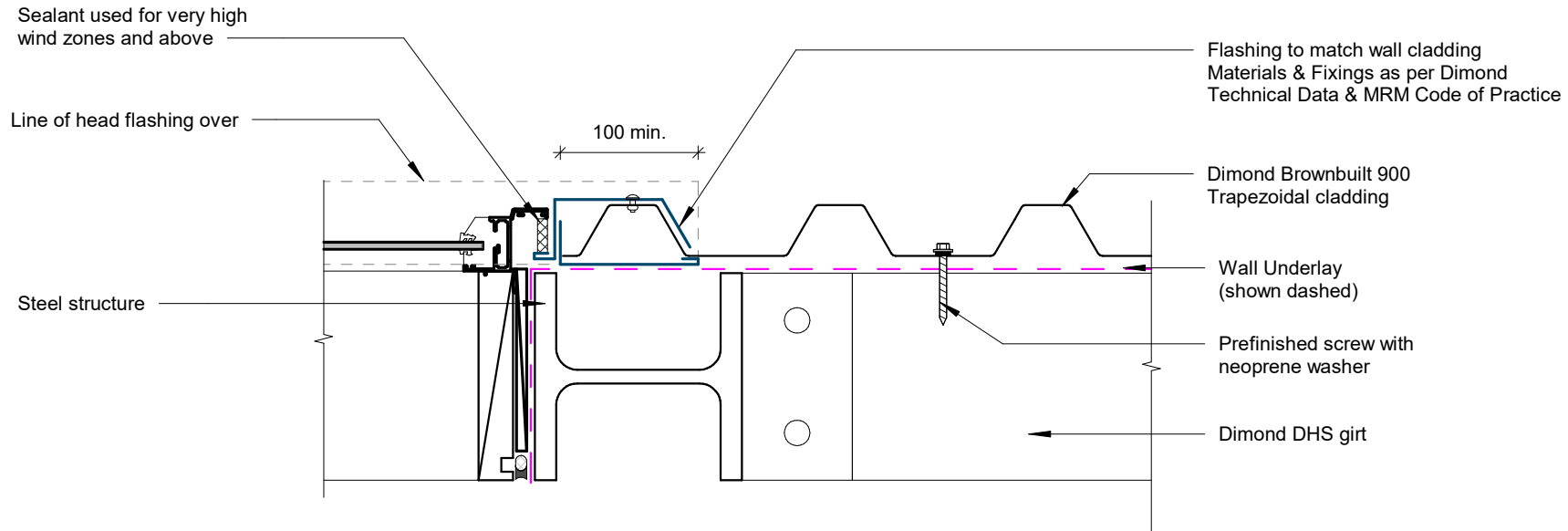
Base Detail

Rev: 1 **Brownbuilt 900 Commercial Vertical Cladding**



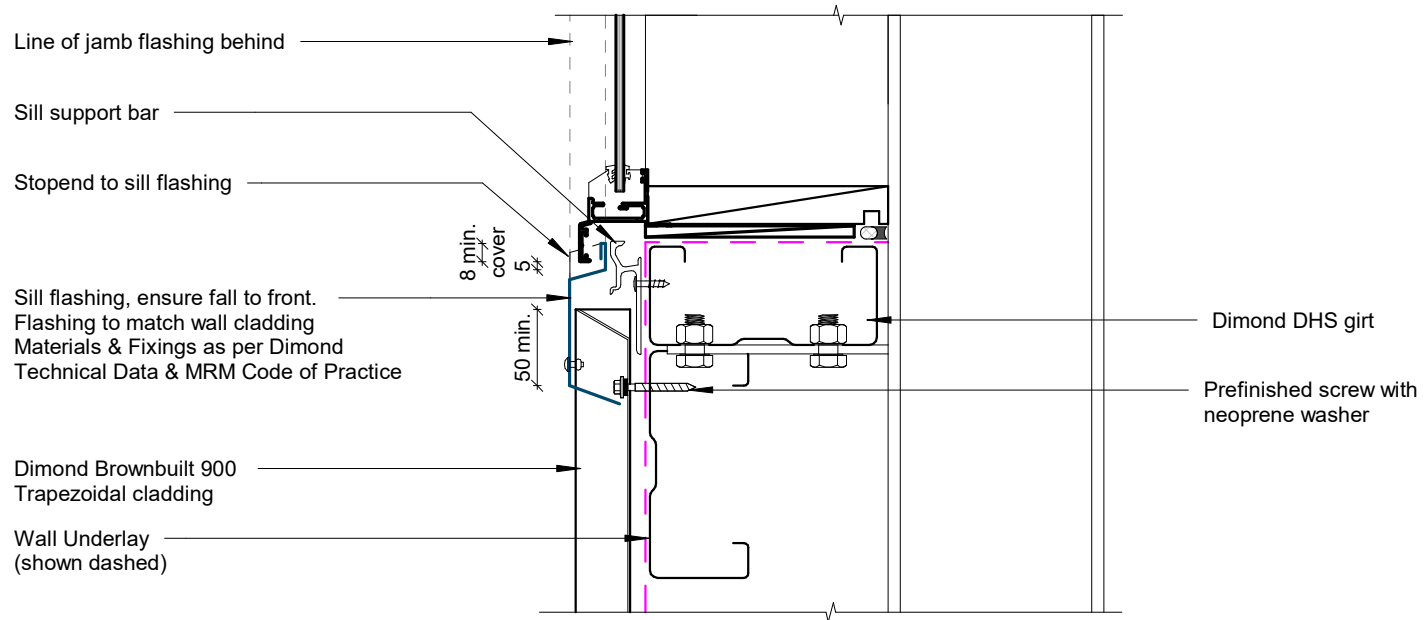
Window / Door Head Detail

Rev: 1 **Brownbuilt 900 Commercial Vertical Cladding**



Window / Door Jamb Detail

Rev: 1 **Brownbuilt 900 Commercial Vertical Cladding**



Window Sill Detail

Rev: 1 **Brownbuilt 900 Commercial Vertical Cladding**